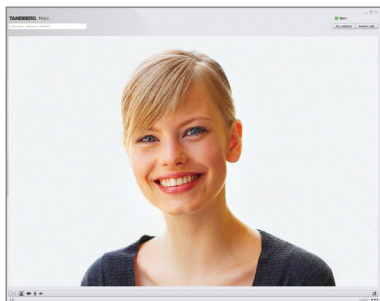




TANDBERG Movi™

Experience the benefits of high definition video conferencing from anywhere, anytime. Movi works with your PC to provide crystal clear video communication from wherever you need to work — the airport, hotel, coffee shop or home office. Movi integrates into the enterprise video conferencing network to keep you connected with your entire video community, no matter where you are.



Movi's intuitive user interface enables fast, easy and reliable connections between desktop video, conference rooms, other Movi users and even Telepresence.

DESIGN FEATURES

- Intuitive user interface with "presence" capability that indicates when users are available
- Interoperable with any standards based SIP endpoint and H.323 system — even Telepresence
- Easy to deploy and manage
- Scalable to thousands of users

APPLICATION FEATURES

- Extend the benefit of high definition PC video to all employees
- Accelerate decisions, scale expertise and create a cohesive team environment
- High definition video conferencing, anytime, anywhere

PERFORMANCE FEATURES

- 720p resolution with 30 fps provides crystal clear image
- PC video industry's best audio performance (MPEG4 AAC-LD, G.722.1, G.711)
- Industry leading, appliance grade adaptive echo cancellation

PROTECT YOUR TECHNOLOGY INVESTMENT WITH
TANDBERG'S PORTFOLIO OF **CONSTANT CARE SERVICES**.
VISIT WWW.TANDBERG.COM

BANDWIDTH

Supporting BW from 128 kbps up to 8 Mbps

VIDEO STANDARDS

H.264

VIDEO FEATURES

Far end
Selfview
720p 30fps encoding and decoding

VIDEO RESOLUTIONS AND FRAME RATES

Depending on video source, available bandwidth and processing power on the computer

NATIVE NTSC:

400p (528 x 400 pixels)
4SIF (704 x 480 pixels)
SIF (352 x 240 pixels)

NATIVE PAL:

448p (576 x 448 pixels)
4CIF (704 x 576 pixels)
CIF (352 x 288 pixels)
QCIF (176 x 144 pixels)
SQCIF (128 x 96 pixels)

NATIVE PC RESOLUTIONS:

XGA (1024 x 768 pixels)
VGA (640 x 480 pixels)

WIDE RESOLUTIONS:

w288p (512 x 288 pixels)
w448p (768 x 448 pixels)
w576p (1024 x 576 pixels)
w720p (1280 x 720 pixels)

AUDIO STANDARDS

MPEG4 AAC-LD

G.722.1

G.711

Depending on video source, available bandwidth and processing power on the computer

AUDIO FEATURES

48kHz wideband audio
Adaptive acoustic echo cancellation
Perceptually optimized packet loss concealment
Audio mute
Speaker volume
Speaker mute
DTMF (in-band and out-of-band)

PRIVACY FEATURES

Audio mute
Video mute

USER INTERFACE

Address book search (from TMS directory and phone books)
Presence indication on contacts
Toggle video mute
Toggle audio mute
Toggle selfview
Switch to turn on selfview on startup
My Contacts
Recent calls with time, date and duration
Missed calls notification
Network quality meter
Call status dialog
DTMF keypad
Bandwidth settings control
Resolution settings control
Auto-start on boot
Auto-sign in on start
Always-on-top mode
Minimize to tray
Select ring tones
Disable ring tones on busy/in call

FIREWALL TRAVERSAL

Firewall traversal enabled through TANDBERG Video Communication Server Expressway™

EMBEDDED ENCRYPTION

Advanced Encryption Standard (AES)
Transport Layer Security (TLS)

IP NETWORK FEATURES

URI dialing
E.164 alias dialing supported through VCS
Adaptive jitter handling
Adaptive bandwidth management
DNS lookup for provisioning clustering

PROTOCOLS SUPPORTED

SIP
H.323 (via VCS interworking)
TCP/IP
UDP
TLS
RTP/RTCP
DTMF (in-band and out-of-band)

DIRECTORY SERVICES

Phone books from TMS
Provisioning directory phone books
Active Directory (LDAP) integration
My contacts on client
Recent calls (with time and date)
Missed calls indication

TANDBERG NETWORK INFRASTRUCTURE REQUIREMENTS

Tandberg Management Server v 12.1 or later
Tandberg Video Conferencing Server, v. X4.1 or later
Flexible bandwidth management (provisioning)

PC REQUIREMENTS

CPU depending on video resolutions to send/receive:

- Minimum CPU supporting SSE2 (Pentium IV or newer)
- Encoding 720p 30fps requires Intel Core2Duo @ 1.2 GHz or better
- Encoding VGA 30fps can be done on as low-end CPUs as the Intel Atom @ 1.6 GHz

Operating system:

- Windows XP SP2 or newer
- Windows Vista

Web camera

CAMERA REQUIREMENTS

Designed to support all windows compatible web cameras
For an optimal video experience, TANDBERG recommends a camera with a light sensitive sensor, wide aperture lens (F2.0 or better), capable of delivering VGA resolution or better at 30 fps
For HD video 720p@30fps, the TANDBERG PresicionHD™ USB Camera is recommended

All specifications subject to change without notice, system specifics may vary.

All images in these materials are for representational purposes only, actual products may differ.

TANDBERG and Movi are registered trademarks or trademarks of TANDBERG in the U.S. and other countries.

TANDBERG

Movi™

TANDBERG WORLD HEADQUARTERS

Philip Pedersens vei 20
1366 Lysaker, Norway
Tel: +47 67 125 125
Fax: +47 67 125 234
Video: +47 67 126 126
tandberg@tandberg.com

1212 Avenue of the Americas,
24th Floor
New York, NY USA 10036
Tel: +1 212 692 6500
Fax: +1 212 692 6501
Video: +1 212 692 6535
tandberg@tandberg.com

February 2009

