



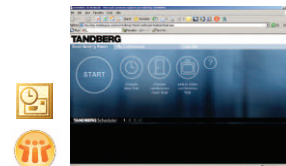
Systems Management



Monitoring, Diagnostics & Reporting



Personal Video Communications



Scheduling

# TANDBERG Management Suite

One management platform for all your visual communication needs. TANDBERG Management Suite (TMS) provides complete visibility and control for on-site and remote video networks. It's scalable, easy-to-use and integrates with existing applications and third-party vendors to increase ROI.

The TANDBERG Management Suite is available as a software application or as a pre-installed server, enabling customers to choose a solution that best meets their network and scalability needs.



TMS Server

#### MANAGEMENT

- Manages on-site and remote video systems, including statistics, directories, booking and software updates
- Intuitive Web-based interface
- Supports management of network and video equipment from multiple vendors
- Manages calls made on multiple protocols (IP using H.323 and SIP, ISDN, V.35 and mixed calls)
- Manages endpoints, MCUs, gatekeepers and gateways directly
- Supports automatic creation of phone books, including Active Directory and H.350
- Manages automated software upgrade
- Easy mass configuration of systems

#### MONITORING/DIAGNOSTICS

- Detailed system-by-system and conference-by-conference records
- Intelligent diagnostics for rapid support response
- System summary page for fast access to most-used information
- Consolidated list of open tickets with links to recommended fixes
- Integrated Network Monitoring Support — Integrates with HP OpenView, IBM Tivoli<sup>®</sup>, NetCool<sup>®</sup> and any SNMP network monitoring tool
- Event notification prevents and minimizes negative service level

#### REPORTING

- Track all system usage and identify trends — packet loss, bandwidth usage, system auditing

#### SCHEDULING

- Scheduling or ad-hoc calling for video, audio, Web and data conferences
- Schedule conferences, book rooms and invite participants using Microsoft Outlook<sup>®</sup>, IBM Lotus Notes<sup>®</sup>\* or Datacraft Hospitality Suite

\* requires software option

TANDBERG EXPERTS SUPPORT TMS DEPLOYMENT AND TRAINING. GET THE MOST FROM YOUR INVESTMENT WITH PROFESSIONAL SERVICES. VISIT [WWW.TANDBERG.COM](http://WWW.TANDBERG.COM)

## MANAGEMENT

### CONFERENCE CONTROL CENTER

Complete conference overview on one screen  
Conference and participant connection control  
Conference-by-conference and system-by-system management and information

### SYSTEM UPGRADES

Automatic download of new software and corresponding release keys

Release key import and export

### SYSTEM CONTROL

Phonebook access  
Monitoring and reporting  
Software upgrades  
Initiate, extend and terminate conferences  
Change video layouts  
Volume control and audio mute/unmute  
Microphone on/off  
Edit local phone books  
Send messages to systems  
Detect illegal system configurations  
Gateway CDRs from MPS

### REMOTE SYSTEM SUPPORT

Phone book access  
Software Upgrades  
Statistics

## LANGUAGE

English (US)  
Russian  
French  
Korean  
Japanese  
Chinese (Simplified)  
Supports over 22 languages for booking and scheduling

## INTELLIGENT TICKET HANDLING

Automated ticket handling (open/close)  
Ticket priority customization  
Proactive system check-up prior to engaging scheduled meetings  
Intelligent Trouble Ticketing Handling  
Diagnostic messages and solution suggestions  
System status, gatekeeper status, SNMP configuration, ISDN/IP configuration and information

## INTEGRATED NETWORK MONITORING SUPPORT

Integrates with HP OpenView, IBM Tivoli®, NetCool® and any SNMP network monitoring tool

## TMS AGENT

Supports TMS Agent Option (requires TANDBERG Video Communication Server X4.1)

## PHONE BOOK SERVICES

Corporate directory enables multiple phone books and folders, browsing and searching from the endpoint  
Supports server based TANDBERG, Polycom phone books, and H.350 white pages  
Centrally-managed server phone books  
Creation of one or multiple phone books  
Search unlimited entries  
Automatic directory import from gatekeeper, ILS and LDAP (single or multiple source)  
Supports over 10 methods of automatic creation of phone books, including Active Directory and H.350  
Create, edit, import and export phone books  
Automatic application of national and international dialing rules  
Automatic identification of ISDN/IP numbers  
Automatic insertion of gateway (GW) prefix, area codes and country codes

## ACCOUNT MANAGEMENT, SECURITY AND PERMISSIONS

FTP audit log from TANDBERG endpoints and MCUs  
Flexibility to limit access to TMS features and limit access to endpoints  
Definition and management of user profiles  
Multiple security permissions  
Single sign-on authentication of users using Windows® authentication

## TEMPLATES/PROVISIONING

Customized template creation, management and distribution to systems

Selectable audio, video, network and bandwidth settings  
Mass Deployment with automatic configuration from TMS  
Ability to create persistent setting templates that can be proactively enforced on systems

## BACKUP

Capability to perform daily configuration restores, ensuring systems begin the day with the proper configuration  
Backup system settings  
Restore lost settings

## MONITORING

**GRAPHICAL MONITORING**  
Map monitor with graphic display  
Customizable background images  
Graphical display of call and system status

## EVENT NOTIFICATION

Event Notification can be integrated into any SNMP Network Management system (e.g., HP Openview and IBM Tivoli)  
E-mail notification to individuals or groups  
Event logging including boot, link down/up, connect error, call connected/ disconnected, lost response/got response, Downspeeding, upgrade start/finish scheduling, gatekeeper registration, low battery, wrong password alert

## BILLING INFORMATION

Flexibility to use billing and account codes  
Full call detail records including billing or account codes for cost analysis or accounting

## CALL DETAIL RECORDS (CDR) AND STATISTICS

Supports CDR capturing from Endpoints, MCUs, Gatekeepers and Gateways  
Call detail records on screen or in native Excel format  
Graphical display of call detail data  
Support for multiple reporting formats: Onscreen, PDF or HTML  
Number of incoming and outgoing calls  
ROI Calculator  
Call date and duration  
Bandwidth usage  
Network type  
Number/address called  
Statistics in data, graph and chart format  
Number of scheduled conferences per person  
Network, gatekeeper and ISDN inter face  
Authentication failure  
Error statistics  
Battery status

## CALL ROUTING

Ability to support Best Impression Cascading and Least Cost Cascading  
Automatic call routing on IP and ISDN  
Least cost call routing on IP and ISDN  
Automatic MCU, gateway and network selection  
Supports MCU cascading, V.35, SIP, H.323, and H.320

## SCHEDULING AND BOOKING\*

### SYSTEM BOOKING

Book system and meeting room simultaneously  
Book recurring meetings and video resources  
Create, password protect, edit or delete booked conferences  
Add Web or data conference to meetings  
Add/remove participants from reservation or connect/disconnect participants during conferences  
Connect conferences ad-hoc or pre-schedule connection  
Reserve resources for dial-in participants (telephone or video on ISDN or IP v.4 or IP v.6)  
Schedule point-to-point conferences or bridged meetings  
Lock conference, preventing new participants from joining  
Invite participants by e-mail  
Customize meeting names

## SCHEDULE OVERVIEW

Overview of scheduled meetings, resources and participants  
Real-time over view of meeting status

## WEB AND DATA CONFERENCING

Integrated scheduling of WebEx conferences with video system booking  
Create a data conference for participants to share applications and edit documents (Supports WebEx, Microsoft Live Meeting and TANDBERG See & Share)  
An e-mail invitation is generated, enabling conference participants to link to the Web conference

## INTEGRATION WITH MICROSOFT EXCHANGE SERVER

Ability to schedule conferences, book rooms and invite participants using Microsoft Outlook  
Requires Microsoft Exchange Server 2000 or 2003  
**OFFICE COMMUNICATOR**  
Ability to launch ad-hoc and multipoint calls via Office Communicator  
Requires Microsoft Live Communications Server 2005

## INTEGRATION WITH IBM LOTUS DOMINO® SERVER

Ability to schedule conferences, book rooms and invite participants using IBM Lotus Notes and Lotus Sametime  
Requires IBM Lotus Domino Server V6.x running on Microsoft Windows®

## REDUNDANCY SUPPORT

Application Redundancy  
Database Clustering

## REQUIREMENTS

### TMS SERVER (MINIMUM REQUIREMENTS)

1 GB RAM  
Pentium 2 Ghz or higher Pentium compatible CPU  
Microsoft Windows 2000 or 2003 Server running the latest Service Packs with Internet Information Services

### TMS CLIENT REQUIREMENTS

Internet Explorer 5.5 and above or Firefox browser 1.5 or higher

### SEE&SHARE SERVER REQUIREMENTS (IF INSTALLING SEE&SHARE OPTION)

Pentium I 500 MHz  
Microsoft Windows 2000, 2003 or XP operating system  
256 MB RAM

### 20 MB of available disk space for services

### SEE&SHARE CLIENT REQUIREMENTS

Internet Explorer 5.5 or higher

## SOFTWARE OPTIONS

Microsoft Exchange Package  
IBM Lotus Sametime Package  
IBM Lotus Domino Package  
3rd party booking API for customized integration  
Network Integration Package (supports Cisco® IP/VC 3540, Polycom® MGC (Accord) MCU, RADVISION vialP MCU and others)

*\*TMS includes TANDBERG Scheduler*

*All specifications subject to change without notice, system specifics may vary.*

*All images in these materials are for representational purposes only, actual products may differ.*

*TANDBERG is a registered trademark or trademark of TANDBERG in the U.S. and other countries.*

*All other trademarks are property of their respective owners.*

## TANDBERG MANAGEMENT SERVER

### PROCESSOR & MEMORY

Intel® Pentium® 4 LGA775 CPU (Max. Intel® Pentium® 4 LGA775 CPU (Max. 3.6GHz with 800MHz FSB and 1MB Cache)  
240-pin DIMM x 2, support Max. 2GB DDRII 400/533 memory

### BIOS

Award System BIOS  
Support Console redirection  
Support Power on after power fail as the BIOS option  
By-pass enable/disable as the BIOS option

### PCI EXPANSION

On-board 32bit/33MHz Mini PCI Socket x1 ( Master )

### STORAGE

IDE 3.5"HDD x 1 (Stand Type) or IDE 3.5"HDD x 2 (Slim Type)  
SATA 3.5"HDD x1 (Stand Type) or SATA 3.5"HDD x2 (Slim Type)  
On-board Compact Flash Socket ( Primary Channel )

### COOLING SYSTEM

On-board 40 x 40 mm fan x 2  
System 40 x 40 mm fan x 2 at Rear

### ETHERNET

Marvell 8053 x 4 (PCI Express x 1): & #28; Copper (Base T, RJ45 with LED) GbE port x 4 (1, 2, 3, 4) & #28; LAN 1 & 2 support by-pass function

### SYSTEM CONTROL AND INDICATOR

Power LED x 1 at Front  
HDD Active LED x 1 at Front  
AT Power Switch x 1 at Rear

### SYSTEM I/O INTERFACE

COM port x 2 ( Front x 1, Rear x 1 )  
USB 2.0 port x 4 ( Front x 2, Rear x 2 )  
GPIO : 4 in 4 out  
Optional 16 x 2 characters LCD Module with keypads through PIO interface

### ENVIRONMENTAL DATA

Operating temperature:  
0°C to 40°C (32°F to 104°F)  
Relative humidity: 10% to 90%  
Storage and space in transport temperature:  
-20°C to 80°C (-4°F to 140°F) non-condensing

### POWER

100-240 VAC, 50-60 Hz, 250W max

### PHYSICAL DIMENSIONS

Height: 1.7" (44mm)  
Width: 16.8" (426mm)  
Depth: 16.4" (419mm)  
19" rack-mountable,  
1U height



## TANDBERG

# Management Suite

### TANDBERG WORLD HEADQUARTERS

Philip Pedersens vei 20  
1366 Lysaker, Norway  
Tel: +47 67 125 125  
Fax: +47 67 125 234  
Video: +47 67 126 126  
tandberg@tandberg.com

1212 Avenue of the Americas,  
24<sup>th</sup> Floor  
New York, NY USA 10036  
Tel: +1 212 692 6500  
Fax: +1 212 692 6501  
Video: +1 212 692 6535  
tandberg@tandberg.com

February 2009